

JACK CHAIN AND MALE LOOPS

APPLICATION

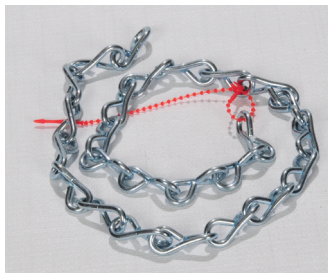
Used for hanging fixtures.

STANDARD MATERIALS

Steel

No. 12 also available on 250' & 500' Reels.
 Additional charge of \$10.00 M Ft. No. 12 Chain -
 Load Capacity 29 lbs. per 100' No. 10 Chain - Load
 Capacity 47 lbs. per 100'

Jack Chain



TYPE 220

CATALOG NUMBER	AVAILABLE IN	TYPE	UNIT PACK	MASTER PACK	LBS. / 100 PCS.	UPC #
220	No. 12 (100' & 50' Hanks)	Plain Polished	50 FEET	1000 FEET	10	82207
220R	No. 12 (100' & 50' Reels)	Plain Polished	50 FEET	1000 FEET	10	82208
221	No. 12 (100' & 50' Hanks)	Zinc Plated	50 FEET	1000 FEET	12	82217
222	No. 10 (100' Hanks)	Plain Polished	50 FEET	1000 FEET	14	82227

APPLICATION

Used with fixture chain to hang lighting fixtures.

STANDARD MATERIALS

Zinc Die Cast



TYPE 215

CATALOG NUMBER	TRADE SIZE	UNIT PACK	MASTER PACK	LBS. / 100 PCS.	UPC #
215	1/2"	100	1000	12	82152