

ALUMINUM SERVICE ENTRANCE HEADS

FOR THREADED RIGID CONDUIT, IMC AND EMT CONDUIT

APPLICATION

Clamp-on type head used with rigid conduit, IMC or E.M.T. for pulling service drop conductors

FEATURES

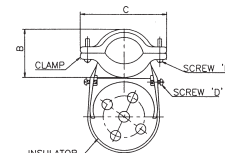
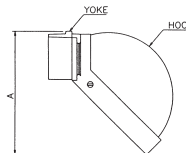
- Bar type Clamp
- Heavy pressure clamp in body
- Screw does not bear directly on conduit
- Weather resistant
- Assembled with electrical grade phenolic insulator with multiple holes

STANDARD MATERIALS

Aluminum
Phenolic Insulator



Clamp-On Type



TYPE 425

CATALOG NUMBER	TRADE SIZE	DIM A	DIM B	DIM C	HOOD + YOKE SCREW 'D' (2NOS.)	CLAMP + YOKE SCREW 'E' (2NOS.)	INSULATOR 'F' CAP SIZE	UNIT PACK	MASTER PACK	LBS. / 100 PCS.	UPC #
425	1/2"	2.7462	1.1584	2.2694	10-24 x 1/2	10-24 x 1	ECI-050	10	50	30	42250
426	3/4"	3.1244	1.3711	2.4743	10-24 x 1/2	10-24 x 1	ECI-075	5	25	39	42650
427	1"	3.4475	1.6233	2.7580	10-24 x 1/2	10-24 x 1	ECI-100	5	25	54	42750
428	1-1/4"	4.1567	2.0015	3.1205	10-24 x 1/2	10-24 x 1-1/4	ECI-125	5	25	56	42850
429	1-1/2"	5.2087	2.2694	3.7509	10-24 x 1/2	10-24 x 1-1/4	ECI-150	-	10	88	42950
430	2"	6.6744	2.6634	4.3340	10-24 x 1/2	10-24 x 1-1/4	ECI-200	-	5	135	43000
431	2-1/2"	9.3142	3.6406	5.6421	5/16-18 x 25/32	5/16-18 x 2	ECI-250	-	2	445	43150
432	3"	9.3142	3.9400	6.3670	5/16-18 x 25/32	5/16-18 x 2	ECI-250	-	1	448	43250
433	3-1/2"	12.7656	4.8186	6.9226	5/16-18 x 25/32	5/16-18 x 2	ECI-300-7	-	1	810	43350
434	4"	12.7656	5.2205	7.6239	5/16-18 x 25/32	5/16-18 x 2	ECI-300-7	-	1	875	43450