

MALLEABLE IRON CABLE CONNECTORS

FOR ARMORED CABLE, METAL CLAD AND FLEXIBLE METALLIC CONDUIT

APPLICATION

To make a 90° termination of flexible metal conduit or cable to a knockout or unthreaded slip hole in a dry location box or enclosure.

FEATURES

- Male Hub Threads - NPSM
- Provided with steel locknuts
- Stamped Steel Covers

STANDARD MATERIALS

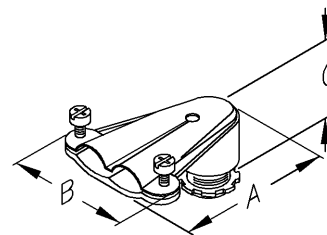
Malleable Iron / Steel Locknuts

STANDARD FINISH

Zinc Plated



90° Duplex



TYPE C271

CATALOG NUMBER	TRADE SIZE	KO SIZE	DIM A	DIM B	DIM C	UNIT PACK	MASTER PACK	LBS. / 100 PCS.	UPC #
C271	3/8"	1/2"	1.188	0.438	0.875	25	250	14	52713

*Please see Cable Chart for Cable Connectors on page 158.

APPLICATION

Connects conduit and terminates bonding conductor.

FEATURES

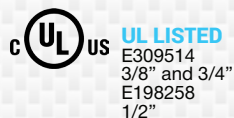
- Male Hub Threads - NPSM
- Provided with steel locknuts
- Stamped Steel Covers

STANDARD MATERIALS

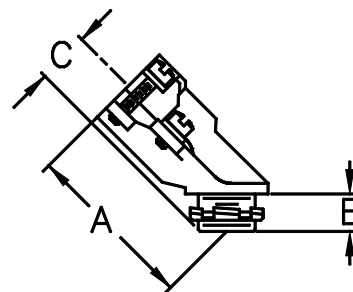
Malleable Iron / Steel Locknuts

STANDARD FINISH

Zinc Plated



45° Angle



TYPE 315M

CATALOG NUMBER	TRADE SIZE	KO SIZE	DIM A	DIM B	DIM C	UNIT PACK	MASTER PACK	LBS. / 100 PCS.	UPC #
315M	3/8"	1/2"	1.750	0.438	1.125	25	250	10	31502
316M	1/2"	1/2"	1.938	0.438	1.750	25	250	12	70885
317M	3/4"	3/4"	1.938	0.500	2.000	25	250	15	70886