

# MALLEABLE IRON 90° CABLE CONNECTORS

## FOR ARMORED CABLE AND FLEXIBLE METALLIC CONDUIT

### APPLICATION

Used with locknut to terminate steel or aluminum flexible metal conduit to enclosure to form a 90° bend.

### FEATURES

- Male hub threads - NPS
- Provided with steel locknut

### STANDARD MATERIALS

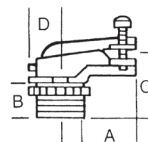
Malleable Iron/Steel Locknuts

### STANDARD FINISH

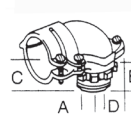
Zinc Plated



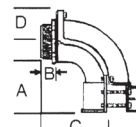
### 90° Squeeze Type



Sizes 3/8" - 1 1/4" are manufactured as shown above



Sizes 1" - 3" are manufactured as shown above



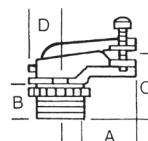
Sizes 3 1/2" - 4" are manufactured as shown above

## TYPE C40

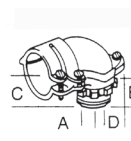
CATALOG NUMBER	TRADE SIZE	KO SIZE	DIM A	DIM B	DIM C	DIM D	UNIT PACK	MASTER PACK	LBS. / 100 PCS.	UPC #
C25	3/8"	1/2"	1.63	0.41	0.85	0.51	50	500	9	38025
C35	1/2"	1/2"	1.63	0.41	0.85	0.51	25	250	20	33511
C36	3/4"	3/4"	1.81	0.50	1.10	0.62	10	100	25	33611
C37	1"	1"	2.10	0.50	1.31	0.81	5	50	62	33711
C38	1-1/4"	1-1/4"	2.75	0.65	1.83	1.12	-	10	120	33811
C39	1-1/2"	1-1/2"	3.37	0.65	1.83	1.50	-	10	149	33911
C40	2"	2"	5.00	0.81	2.75	1.70	-	5	309	34011
C65	2-1/2"	2-1/2"	5.50	1.00	4.12	2.00	-	2	352	36511
C66	3"	3"	6.62	1.00	4.50	2.25	-	1	553	36611
C67	3-1/2"	3-1/2"	8.25	1.30	5.56	3.15	-	1	1216	36711
C68	4"	4"	9.30	1.50	7.00	3.45	-	1	1437	36811

\*Please see Cable Chart for Cable Connectors on page 158.

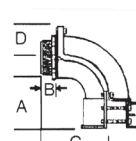
### 90° Squeeze Type - Insulated Throat



Sizes 3/8" - 1 1/4" are manufactured as shown above



Sizes 1" - 3" are manufactured as shown above



Sizes 3 1/2" - 4" are manufactured as shown above

## TYPE C40T

CATALOG NUMBER	TRADE SIZE	KO SIZE	DIM A	DIM B	DIM C	DIM D	UNIT PACK	MASTER PACK	LBS. / 100 PCS.	UPC #
C25T	3/8"	1/2"	1.63	0.41	0.85	0.51	50	500	9	38125
C35T	1/2"	1/2"	1.63	0.41	0.85	0.51	25	250	20	33513
C36T	3/4"	3/4"	1.81	0.50	1.10	0.62	10	100	25	33613
C37T	1"	1"	2.10	0.50	1.31	0.81	5	50	62	33713
C38T	1-1/4"	1-1/4"	2.75	0.65	1.83	1.12	-	10	120	33813
C39T	1-1/2"	1-1/2"	3.37	0.65	1.83	1.50	-	10	149	33913
C40T	2"	2"	5.00	0.81	2.75	1.70	-	5	309	34013
C65T	2-1/2"	2-1/2"	5.50	1.00	4.12	2.00	-	2	352	36513
C66T	3"	3"	6.62	1.00	4.50	2.25	-	1	553	36613
C67T	3-1/2"	3-1/2"	8.25	1.30	5.56	3.15	-	1	1216	36713
C68T	4"	4"	9.30	1.50	7.00	3.45	-	1	1437	36813