

ALUMINUM SET-SCREW CONDUIT BODIES

FOR EMT CONDUIT

APPLICATION

To provide access to conductors for pulling, splicing, and maintenance. Used for thinwall conduit.

FEATURES

- Die cast from high-strength, corrosion and weather resistant, copper-free aluminum alloy.
- Flat back design for easy mounting close to walls.

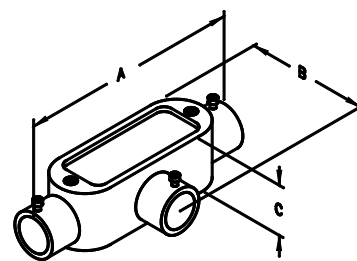
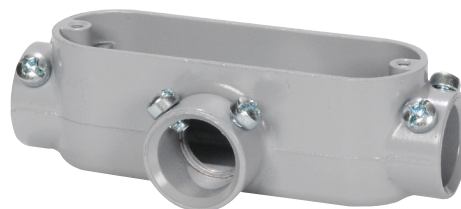
STANDARD MATERIALS

1/2" - 2"
Die Cast/Copper-Free
Aluminum

2 1/2" - 4"
Sand-Cast Copper-Free
Aluminum

STANDARD FINISH

Aluminum Enameled



TYPE T1AT

CATALOG NUMBER	TRADE SIZE	DIM A	DIM B	DIM C	MAX WIRE SIZE	VOL. CU.IN.	UNIT PACK	MASTER PACK	LBS. / 100 PCS.	UPC #
T TYPE										
T1AT	1/2"	4.75	2.06	1.38	N/A	4.35	10	50	23	48015
T2AT	3/4"	5.56	2.25	1.63	3 #6 AWG	7.25	10	50	38	48025
T3AT	1"	6.44	2.63	1.88	3 #4 AWG	12.20	5	25	53	48035
T4AT	1-1/4"	8.25	3.56	2.50	3 #2 AWG	33.10	-	10	100	48045
T5AT	1-1/2"	8.38	3.56	2.50	3 #1/0 AWG	33.10	-	10	98	48055
T6AT	2"	10.69	4.38	3.13	3 #4/0 AWG	67.00	-	5	265	48065
T7AT	2-1/2"	13.25	5.75	4.00	3 #4/0 AWG	67.00	-	1	375	48066
T8AT	3"	13.25	5.75	4.50	3 #4/0 AWG	175.00	-	1	444	48067
T9AT	3-1/2"	16.13	7.69	5.63	3 #400 MCM	298.00	-	1	1146	48068
T10AT	4"	16.13	7.69	5.63	3 #400 MCM	300.00	-	1	1079	48069