

ALUMINUM THREADED CONDUIT BODIES

FOR THREADED RIGID CONDUIT AND IMC

APPLICATION

To provide access to conductors for pulling, splicing, and maintenance. Threaded for rigid conduit and IMC

FEATURES

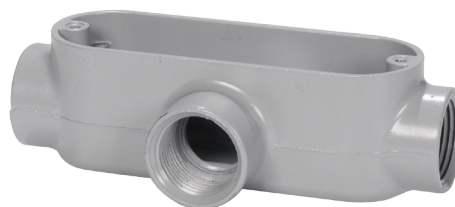
- Tapered threaded hubs (NPT)
- Raintight when used with gasketed covers
- Die cast from high-strength, corrosion and weather resistant, copper-free aluminum alloy.
- Flat back design for easy mounting close to walls

STANDARD MATERIALS

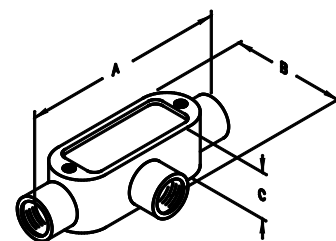
1/2" - 2"
Die cast/Copper-free Aluminum
2-1/2" - 4"
Sand-cast/Copper-free Aluminum

STANDARD FINISH

Aluminum Enameled



TYPE T1A



CATALOG NUMBER	TRADE SIZE	DIM A	DIM B	DIM C	MAX WIRE SIZE	VOL. CU.IN.	UNIT PACK	MASTER PACK	LBS. / 100 PCS.	UPC #
T Type										
T1A	1/2"	4.75	2.06	1.38	N/A	4.35	10	50	23	44015
T2A	3/4"	5.56	2.25	1.63	3 #6 AWG	7.25	10	50	38	44025
T3A	1"	6.44	2.63	1.88	3 #4 AWG	12.20	5	25	53	44035
T4A	1-1/4"	8.25	3.56	2.50	3 #2 AWG	33.10	-	10	100	44045
T5A	1-1/2"	8.38	3.56	2.50	3 #1/0 AWAG	33.10	-	10	98	44055
T6A	2"	10.69	4.38	3.13	3 #4/0 AWG	67.00	-	5	265	44065
T7A	2-1/2"	13.25	5.75	4.00	3 #4/0 AWG	67.00	-	1	375	44075
T8A	3"	13.25	5.75	4.50	3 #4/0 AWG	175.00	-	1	444	44085
T9A	3-1/2"	16.13	7.69	5.63	3 #400 MCM	298.00	-	1	1146	44095
T10A	4"	16.13	7.69	5.63	3 #400 MCM	300.00	-	1	1079	44105